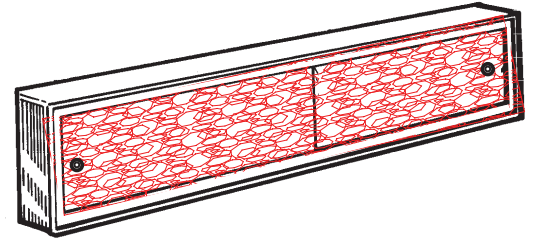


COSMETIC BOX WITH PLASTIC DOOR



FEATURES

- Surface-mounted installation
- Easy to clean, heavy gauge steel construction
- Slide-by styrene doors
- Stainless steel frame trim
- Includes mounting hardware

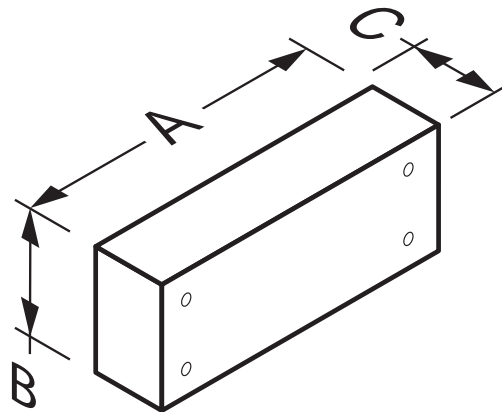
TYPICAL SPECIFICATION

Bath cabinet shall be NuTone Cosmetic Box Series Model J169024CH, (J169030CH), (J169036CH), (J169048CH).

Surface-mounted cabinet shall be of heavy gauge steel construction, finished in baked-on powder coat paint after forming.

Unit shall have two styrene doors, matching door pulls included.

MODEL NO.	OVERALL SIZE		
	A	B	C
J169024CH	24 1/4	8 3/4	4 1/4
J169030CH	30 1/4	8 3/4	4 1/4
J169036CH	36 1/4	8 3/4	4 1/4
J169048CH	48 1/4	8 3/4	4 1/4



Broan-NuTone Storage Solutions, 501 S. Wilhite Street, Cleburne, TX 76031 (1-800-325-8351)

REFERENCE	QTY.	REMARKS	Project
			Location
			Architect
			Engineer
			Contractor
			Submitted by
			Date